



2021 Legislative Priorities

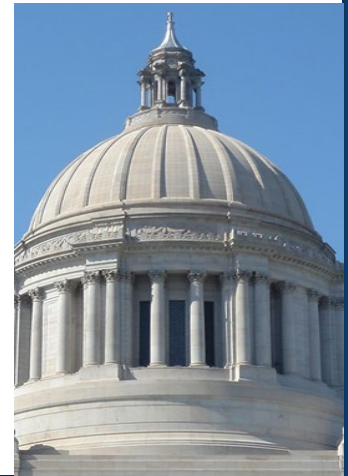
Local Legislator Virtual Meeting
December 15, 2020

Summary of priorities



2021 Legislative Priorities

- **Act early in legislative session to maintain K-12 investments**
Protect us from funding decreases solely due to the pandemic as our budget and staffing were built on full enrollment. Districts face cuts to general apportionment, transportation, and a lower levy cap for 2022.
- **Address the adverse impacts of the pandemic on the physical health and social emotional needs of students**
Provide stable funding for the staffing and material costs necessary to support a safe learning environment. Invest in the ongoing social emotional needs of students that have been worsened by the pandemic.
- **Send voters a constitutional amendment on simple majority**
Change the 60 percent super-majority requirement for school district bond approvals to a simple majority. Washington is one of only 11 states requiring super majority.





**Act early in legislative session to
maintain K-12 investments**

Act early in the session – Enrollment



Student enrollment drop has multiple implications on revenues

- Student enrollment drives most revenue sources
- 808 student drop at \$10,117 per FTE totals \$8.17 million cut
 - ♦ Additional cut of \$10,037 per Special Education student

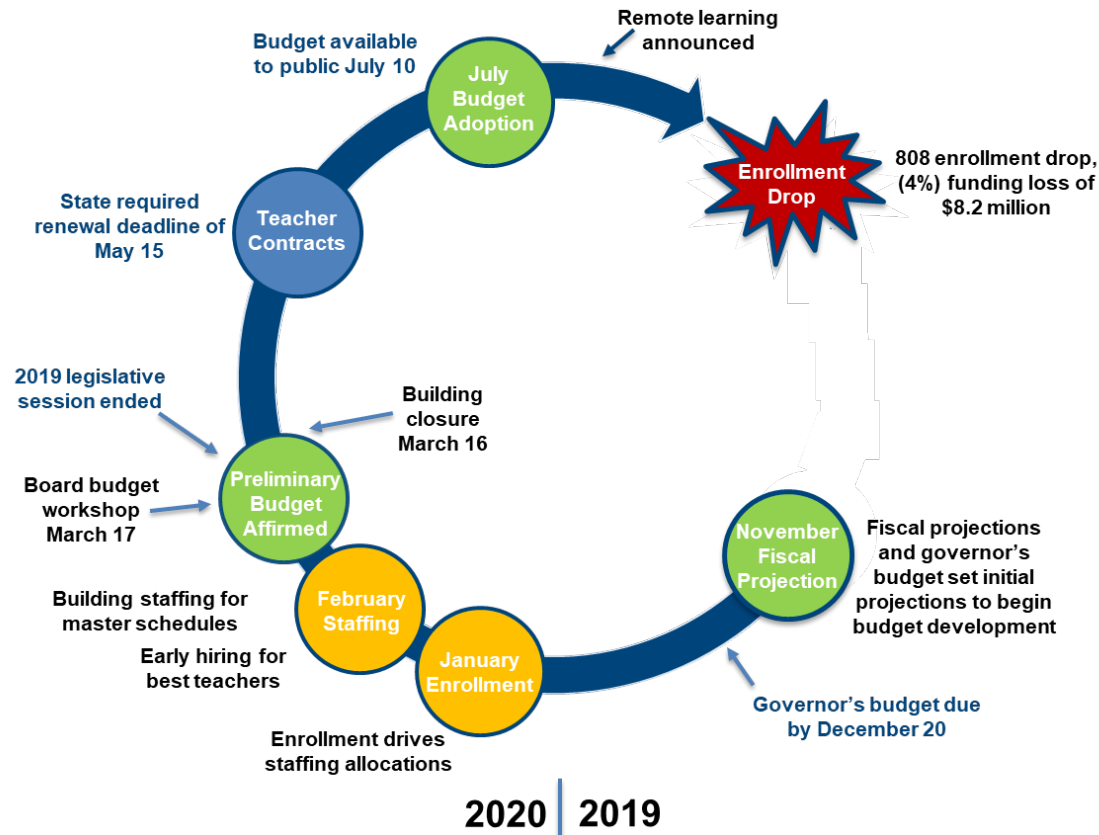


Act early in the session – Enrollment



Staffing contracts in place in May by law

- Budget and staffing in place by April for July budget deadline
- Drop of 808 students funds about 35 teaching positions
- Hold on summer hiring only partially offsets funding loss

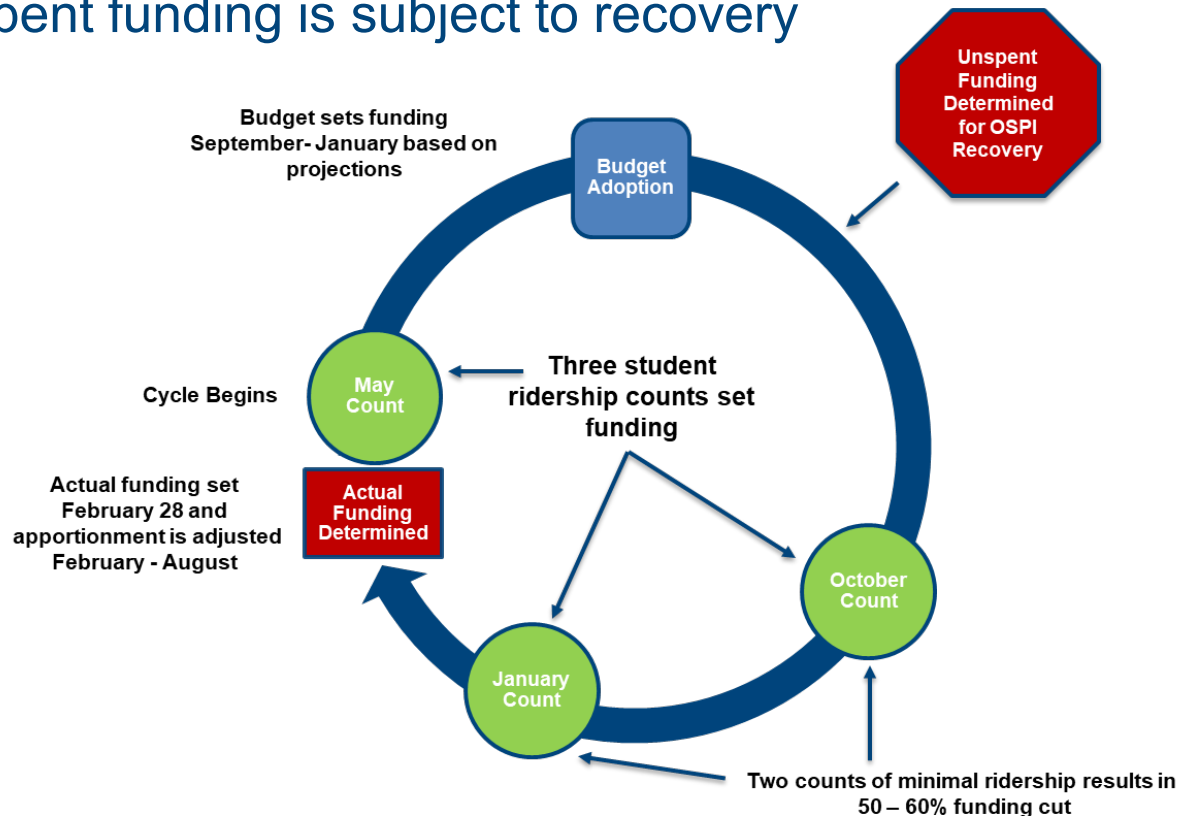


Act early in the session – Transportation



Student ridership drives funding

- Most drivers on furlough with employer benefit contribution paid
- Furlough savings do not offset 50-60% funding cut (\$5-6 million)
- Maintaining driver workforce essential to building reentry
- Unspent funding is subject to recovery



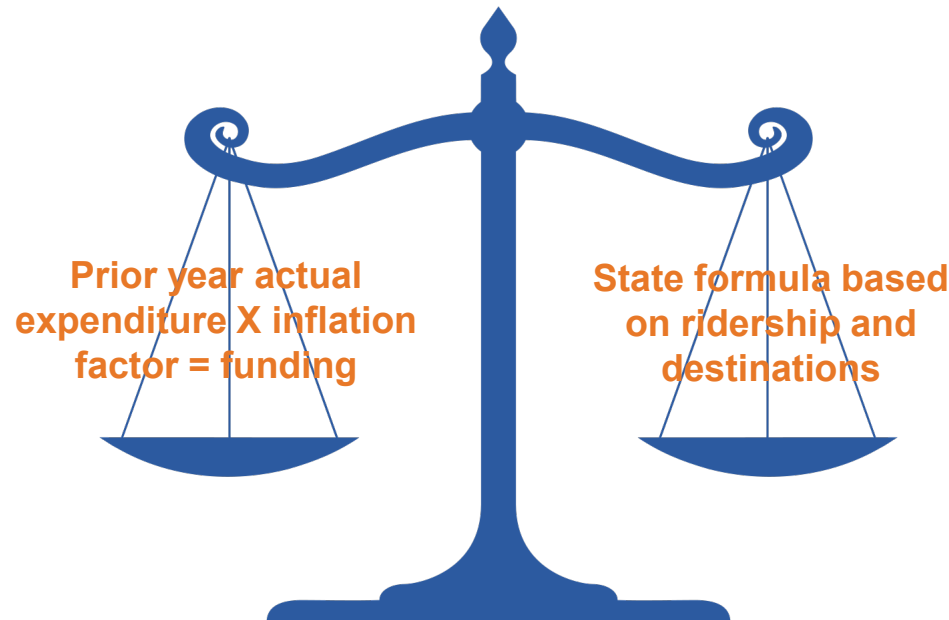
Act early in the session – Transportation



Formula also impacts 2021-22 funding

- Prior year expenditures set funding in “lesser of” formula
- Most districts have made all efforts to reduce expenditures

Funding based on “lesser of”



Act early in the session – 2022 Levy Cap



Levy formula impacted by enrollment

- Enrollment loss impacts many area districts
- State cap for Everett will drop by \$2.1 million for 2022

Levy formula based on “lesser of”



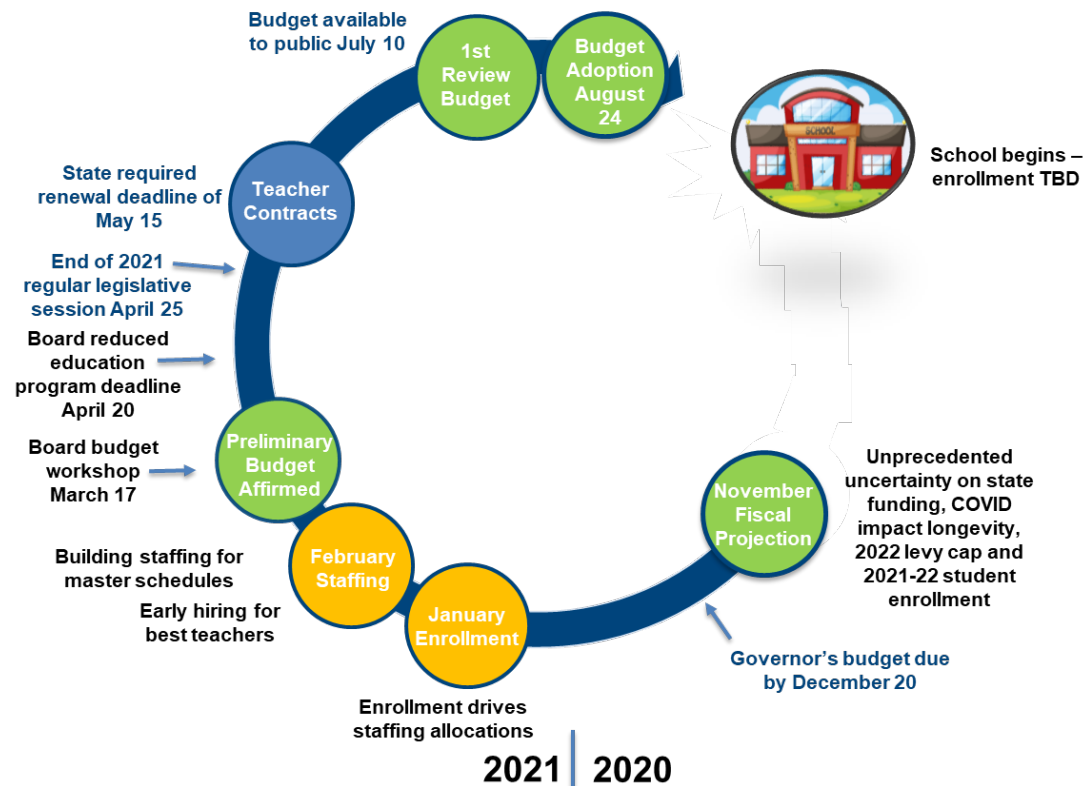
Act early in the session – Timing is Critical

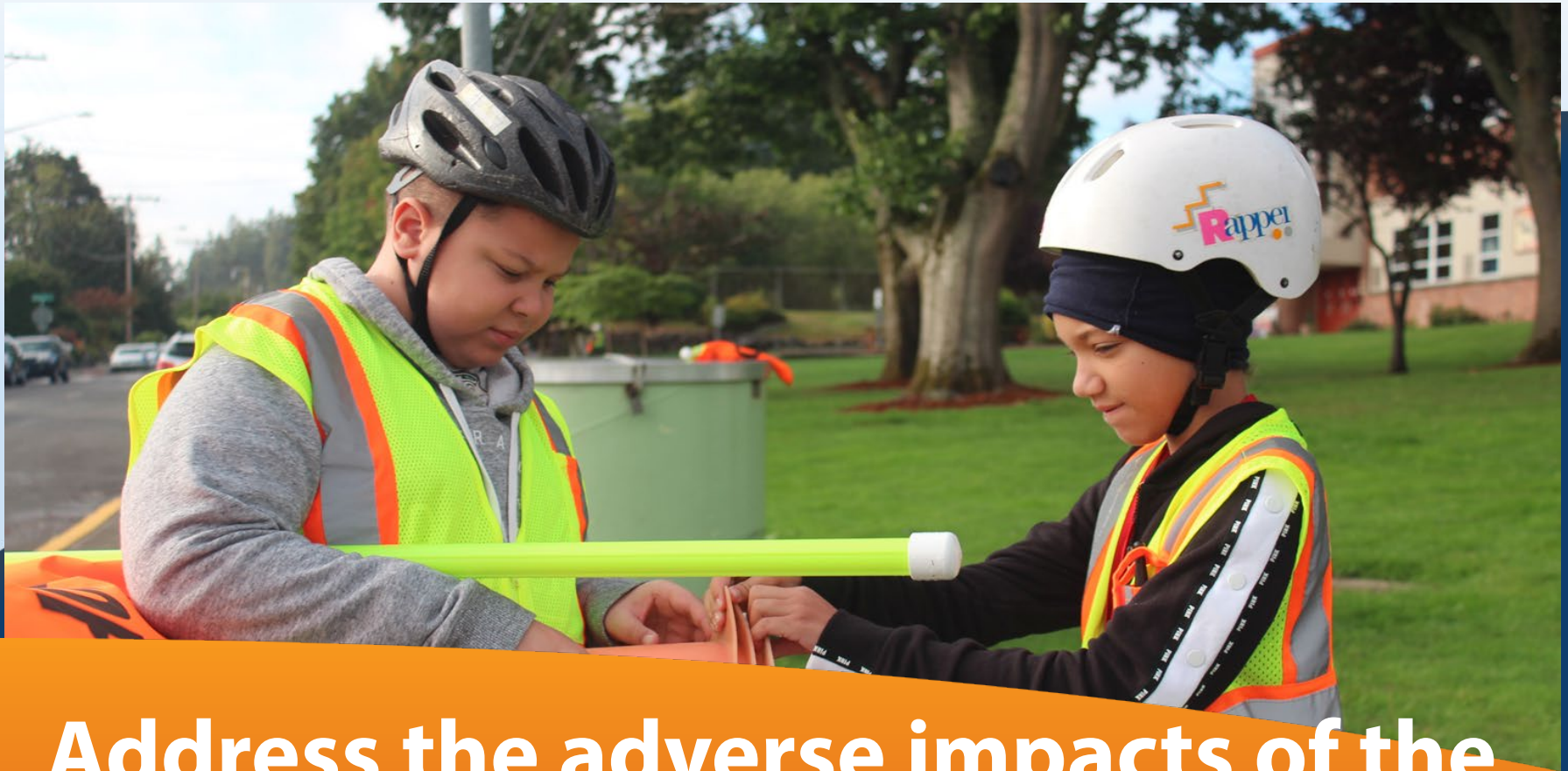


Districts need early action to avoid cuts

- Districts cannot wait until end of session(s)
- Teaching decisions must be made in March

Annual budget and staffing cycle





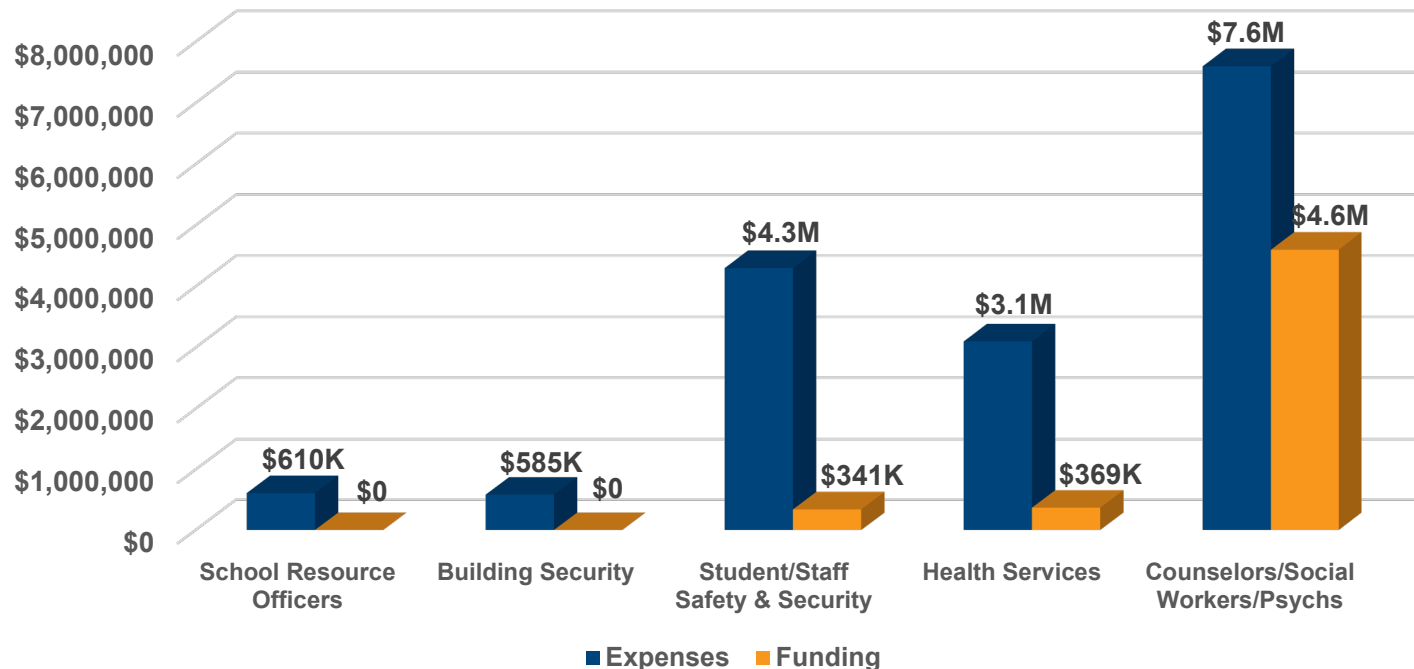
Address the adverse impacts of the pandemic on the physical health and social emotional needs of students

Health and social emotional needs



Advance vital programs and services

- Increase funding for staff professional development training to systemically address the current crisis highlighted by COVID
- Reimburse K-12 COVID costs not covered by federal relief funding
- Make future investments for additional staffing supports



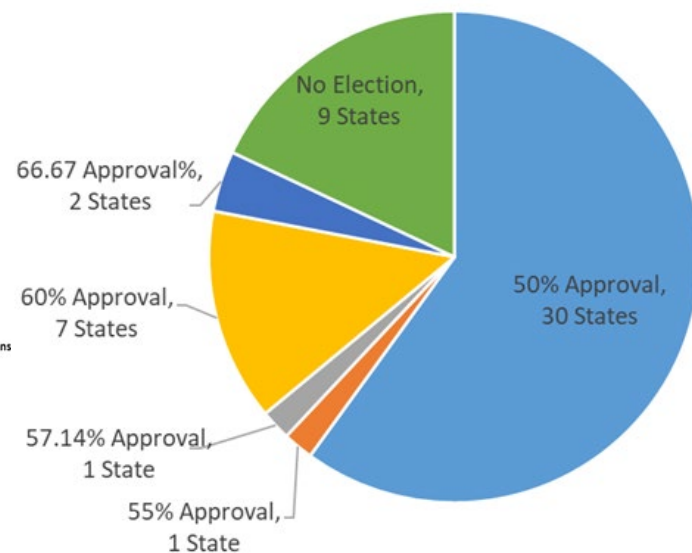
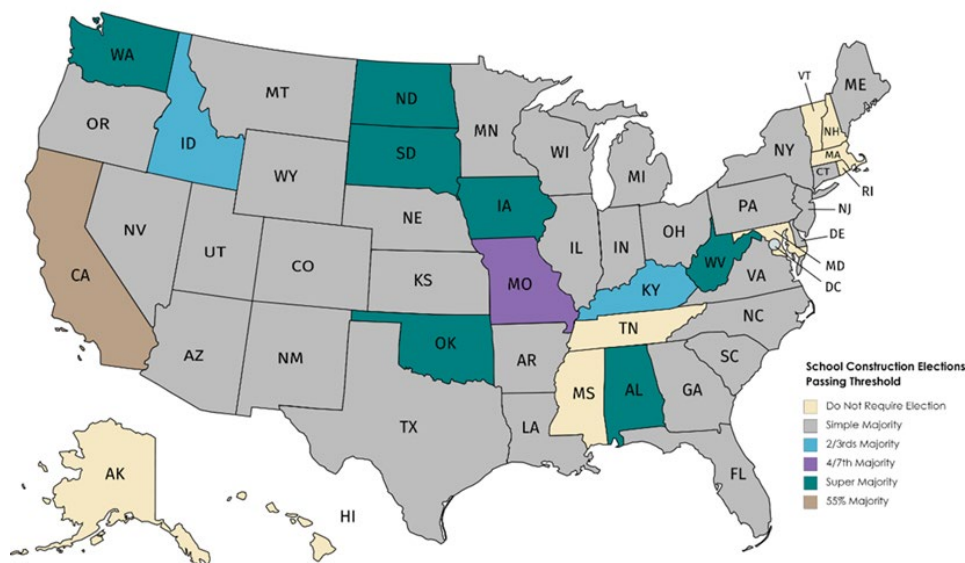


Send voters a constitutional amendment on simple majority

Simple majority on bonds



Washington is one of 11 states requiring super majority for capital bond measures



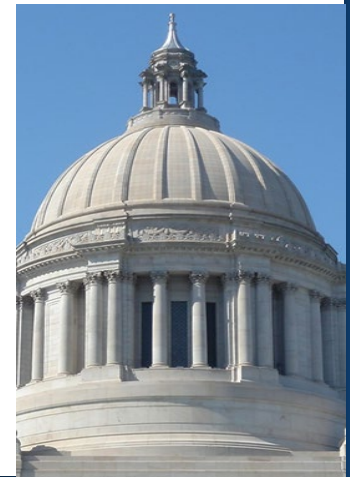
Closing statement



2021 Legislative Priorities

- **Act early in legislative session to maintain K-12 investments**
- **Address the adverse impacts of the pandemic on the physical health and social emotional needs of students**
- **Send voters a constitutional amendment on simple majority**

We recognize the challenges of the significant state revenue shortfall and the difficult decisions ahead in the 2021 session. We urge the legislature to keep in mind the long-term K-12 needs that should be addressed as the economy recovers from this pandemic (e.g., special education, prototypical school model, and SEBB).





Discussion